

Rosemore Place Floor Plan



SANDRA WATKINS & CO.

Real Estate Services Group

New Home Construction



Sandra Watkins

770-324-3680

sandra.metrohomes@gmail.com

Marketed for sale by



RE/MAX Town & Country

Sandra Watkins & Co.

102 Overlook Cir, Suite A

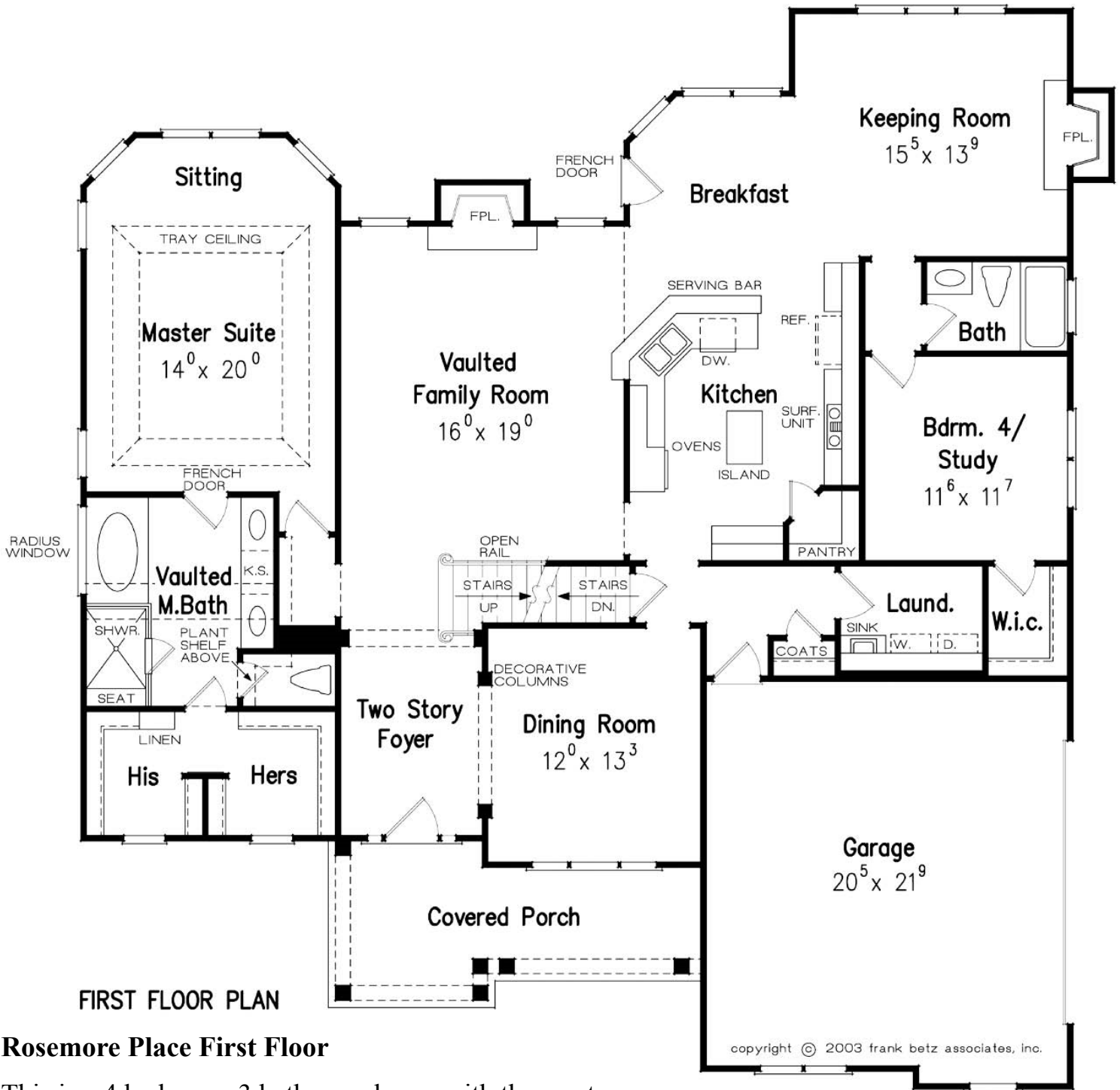
Canton, GA 30115



John Marion

703-371-9548

johnmarion.com@gmail.com



FIRST FLOOR PLAN

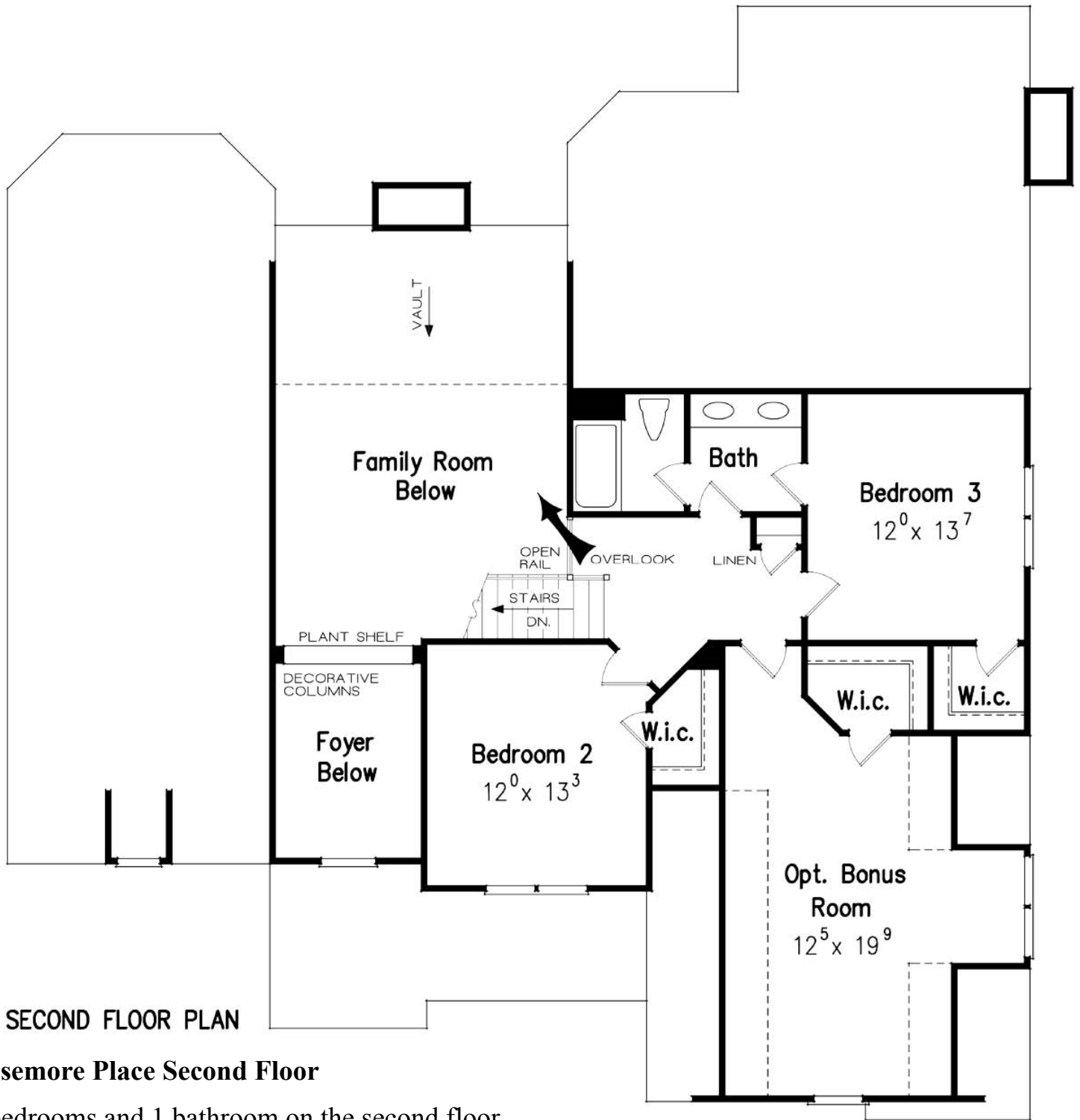
Rosemore Place First Floor

This is a 4 bedroom, 3 bathroom home with the master bedroom and an additional bedroom on the first floor. Plan changes and options vary by individual builder.

First Floor: 2113 sf
Second Floor: 583 sf
Total: 2696 sf
Opt. Bonus 341 sf
Overall Dimensions: 58'-4" x 61'-0"



RE/MAX Town & Country
 Sandra Watkins & Co.
 102 Overlook Circle, Suite A



SECOND FLOOR PLAN

Rosemore Place Second Floor

2 bedrooms and 1 bathroom on the second floor.

Optional bonus room available above garage.

<p>Sandra Watkins Associate Broker 770-324-3680</p>	<p>John Marion Sales Agent 703-371-9548</p>
--	--

New Home Construction and Sales

Sandra Watkins has been selling new homes for over 14 years in the North Metro Atlanta area.

Our team of experienced sales agents are available to meet with you and explain the opportunities to buy a newly constructed home.

We can also explain how you can have a new custom home built according to your specifications and design standards.

Building Lots and Pre-Sales

Our builders can construct a custom home for you or you may buy a home with a floor plan selected by the builder for a particular lot.

Custom Built Homes

We represent a number of builders who have lots available to construct your new custom built home. You may select one of the builders plans in his inventory of blueprints, select from any of the plans offered by Frank Betz Associates, Inc., or bring your own plans.

Pre-Sales

You can also buy a home prior to breaking ground or during the construction process. These “pre-sales” will be a floor plan already selected by the builder. But it gives you the opportunity as the buyer to add some customizations of your own, such as flooring, paint colors, and lighting selections.

Home Building Process

The home building process takes time, normally at least four months and often six months or even longer, depending on a number of factors.

Our RE/MAX Town & Country sales agents will guide you through the process of selecting a lot, helping you to understand some of the options with various floor plans, and the specific features available from each builder.

Your selections and customizations are put in writing and will become a part of the purchase and sales agreement to buy your new home.

During the home building process, you will need to be available to make selections when the builder asks if you have not made all your final selections at the point of signing the sales agreement.

New Home Sales Agents

Contact one of our new homes sales agents for more information and to find a builder for your new home.

Sandra Watkins

Associate Broker

770-324-3680

John Marion

Sales Agent

703-371-9548